



<http://kentarchaeology.org.uk/research/archaeologia-cantiana/>

Kent Archaeological Society is a registered charity number 223382

© 2017 Kent Archaeological Society

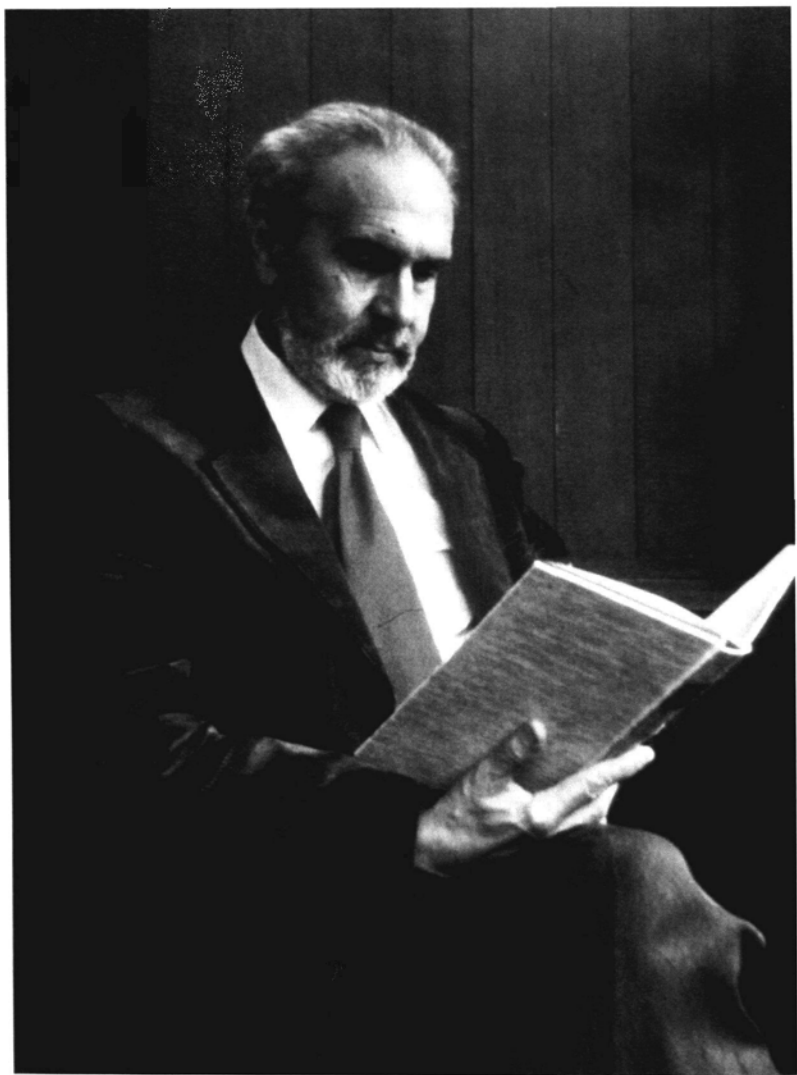
# Archæologia Cantiana

'ANTIQUITATES SEU HISTORIARUM RELIQUIAE SUNT TANQUAM TABULÆ NAUFRAGII; CUM, DEFICIENTE ET FERE SUBMERSA RERUM MEMORIA, NIHILOMINUS HOMINES INDUSTRII ET SAGACES, PERTINACI QUADAM ET SCRUPULOSA DILIGENTIA. EX GENEALOGIIS, FASTIS, TITULIS, MONUMENTIS, NUMISMATIBUS, NOMINIBUS PROPRIIS ET STYLIS. VERBORUM ETYMOLOGIIS, PROVERBIIS, TRADITIONIBUS, ARCHIVIS, ET INSTRUMENTIS, TAM PUBLICIS QUAM PRIVATIS, HISTORIARUM FRAGMENTIS, LIBRORUM NEUTIQUE HISTORICUM LOCIS DISPERSIS.—EX HIS, INQUAM, OMNIBUS VEL ALIQUIBUS, NONNULLA A TEMPORIS DILUVIO ERIPUNT ET CONSERVANT, RES SANE OPEROSA, SED MORTALIBUS GRATA ET CUM REVERENTIA QUADAM CONJUNCTA.'

'ANTIQUITIES, OR REMNANTS OF HISTORY, ARE, AS WAS SAID, TANQUAM TABULÆ NAUFRAGII; WHEN INDUSTRIOUS PERSONS, BY AN EXACT AND SCRUPULOUS DILIGENCE AND OBSERVATION, OUT OF MONUMENTS, NAMES, WORDS, PROVERBS, TRADITIONS, PRIVATE RECORDS AND EVIDENCES, FRAGMENTS OF STORIES, PASSAGES OF BOOKS THAT CONCERN NOT STORY, AND THE LIKE, DO SAVE AND RECOVER SOMEWHAT FROM THE DELUGE OF TIME'—*Advancement of Learning*, ii.

*All rights reserved. No part of this publication may be reproduced, stored in a retrieval system, or transmitted, in any form or by any means electronic, mechanical, photocopying, recording or otherwise without the permission of the Kent Archaeological Society.*





PETER JAMES TESTER, F.S.A.  
(1921–1994)

# Archæologia Cantiana

Being Contributions to the History and Archaeology of Kent



VOLUME CXII

1993

*Published by the*

KENT ARCHÆOLOGICAL SOCIETY

Registered charity no. 223382

*Produced for the Society by*

Alan Sutton Publishing Limited, Stroud

1994

## NOTICES

The Council of the Kent Archæological Society invites the attention of members to the following matters:

- (1) Neither the Council nor the Hon. Editor is answerable for opinions put forward in this work. Each contributor is alone responsible for the contents of his paper.
- (2) Papers submitted for publication in *Archæologia Cantiana* should be complete in all respects before being sent to the Hon. Editor. They should be typed in double spacing, on one side of the paper only. Photographs for Plates must be of the highest possible standard on glazed prints. Line drawings for Figures should be in Indian ink on good quality board or paper. In regard to the proportions of such drawings authors should note the size of a page of the volume. On drawings which must be considerably reduced for reproduction the lettering and lines must be boldly executed. For further information consult 'Notes for the Guidance of Contributors to *Archæologia Cantiana*, printed in Volume xcii (1976), 275-6; or, the Honorary Editor will be glad to supply a copy on request.
- (3) Changes of address and errors in the list of members should be notified at once to the Hon. General Secretary, Mr A.C. Harrison, B.A., F.S.A., Pring's Cottage, Pilgrim's Way, Upper Halling, Rochester.
- (4) An expansion of the membership would enable the Society to publish a larger volume and to undertake extended archæological work generally. Members, therefore, are urged to induce their friends interested in archæology to join the Society. Information as regards the Society's activities, copies of the Rules and forms of application for membership may be obtained from the Hon. General Secretary.
- (5) The annual subscription covers all the privileges of membership, but additional contributions in the form of annual or occasional donations to the *Archæologia Cantiana* Fund, to the Records Publication Fund, towards excavation work, or for the general purposes of the Society, are invited and are always very welcome.
- (6) It would be a great convenience if members could pay their subscriptions by Banker's Order whilst if they cared to sign a seven-year Deed of Covenant it would enable the Society to recover Income tax at no extra cost to the member. Forms may be obtained from the Hon. Treasurer or the Hon. Membership Secretary.

Subscriptions (at present £10.00 per annum) are due on the 1st of January, and, if not paid by Banker's Order, should be sent as early in the year as possible to the Hon. Membership Secretary.
- (7) The Society's room at Maidstone Museum is open daily to members who wish to consult books in the Reference library, and the Hon. Librarian and Hon. Curator are always glad to help callers to obtain any information which they may require.